

# Public Health Association of Nebraska

## Annual Highlights 2007

ADVOCATES FOR A  
HEALTHY NEBRASKA



September 2007



1321 SOUTH 37<sup>TH</sup> STREET  
LINCOLN, NEBRASKA 68510  
PHONE 402.483.1039  
FAX 402.483.0570  
WWW.PUBLICHEALTHNE.ORG

---

*Public Health is Your Health Too !!!*

---

Dear Members and Friends of PHAN:

It's been a great year for public health in Nebraska, and I'm looking forward to celebrating with everyone at this year's PHAN Conference.

It has been an honor to serve as president of the Public Health Association of Nebraska for the past year. As PHAN continues to build as an organization, I am continually impressed by the commitment and skills of the organization and its members. PHAN continues to receive well-deserved recognition as a public health leader throughout the state, and from across the country.

The past year has been a time of tremendous growth for PHAN. Through collaborative partnerships we have continue to help lead the charge for growth amongst the local and state public health systems, seen greater surveillance systems established locally to monitor and track communicable disease, have increased preparedness for threats to the public's health such as pandemic influenza, and continue to promote the importance of public health to individuals, businesses and communities.

PHAN also continues to strengthen its role in the area of public health policy and advocacy. PHAN is recognized as an important and respected voice of public health in Nebraska. PHAN with its members and other partners are vocal advocates for policies to improve the public health of Nebraska. By having a "collective voice" advocating for strong public health policies we can continue to have success in the political arena.

Last year, the PHAN Board was pleased to approve the establishment of the Public Health Education Section. Our sections now include: Public Health Nursing, Emergency Response Coordinators, Local Health Directors, Boards of Health, Prevention Providers and the Student Section. We have developed strong working relationships with our state and local partners and are committed to seeing that these relationships offer the best public health programs and services to all Nebraskans. The section accomplishments have been numerous and many are highlighted throughout this report.

We celebrate the progress that has been made in over the last year, at the same time; we plan to build on those past successes. With your support and assistance we can continue to move forward and maintain our momentum because of the commitment and diversity of you, our members.

Sincerely,

A handwritten signature in blue ink that reads 'Jeff Soukup'.

Jeff Soukup, President  
Public Health Association of Nebraska

# 2007 PUBLIC HEALTH ASSOCIATION OF NEBRASKA OFFICERS

## EXECUTIVE COMMITTEE

### PRESIDENT

Jeff Soukup (1<sup>st</sup> term expires 2008)  
Department of Health and Human Services  
Tobacco Free Nebraska  
PO Box 95026  
Lincoln, NE 68509  
(402) 471-1807  
e-mail: [jeff.soukup@dhhs.ne.gov](mailto:jeff.soukup@dhhs.ne.gov)

### PRESIDENT-ELECT

Vacant

### PAST-PRESIDENT

Jeff Kuhr (term expires 2007)  
Three Rivers Public Health Department  
33 West 4<sup>th</sup> Street  
Fremont, NE 68025  
402-727-5396  
[jeff.kuhr@3rphd.org](mailto:jeff.kuhr@3rphd.org)

### SECRETARY

Shirley Terry (2nd term - expires 2007)  
LLCHD - Nebraska Health Connection  
2662 Cornhusker Hwy, Suite 7  
Lincoln, NE 68521  
402-471-7950 (phone)  
[Shirley.terry@hhss.state.ne.us](mailto:Shirley.terry@hhss.state.ne.us)

### TREASURER

Pat Lopez  
4521 Hill Drive  
Lincoln, NE 68510  
Phone 402-489-5090  
e-mail: [jpic75@aol.com](mailto:jpic75@aol.com)

### AFFILIATE REPRESENTATIVE

David Corbin  
School of HPER  
University of Nebraska at Omaha  
Omaha, NE 68182-0216  
Phone: 402/554-3237  
FAX: 402/554-3693  
E-mail: [dcorbin@unomaha.edu](mailto:dcorbin@unomaha.edu)

## BOARD MEMBERS

Kate Nickel (2<sup>nd</sup> term - expires 2007)  
UNMC College of Nursing  
1924 8th Avenue  
Kearney NE 68845  
308-865-8751  
[kanickel@unmc.edu](mailto:kanickel@unmc.edu)

Kathy Nordby (2<sup>nd</sup> Term expires 2009)  
Elkhorn Logan Valley Public Health Department  
Box 779  
Wisner, NE 68791-0280  
402-529-2233  
[elvphd@gpcom.net](mailto:elvphd@gpcom.net)

Jay Noren, MD, MPH, Dean (1<sup>st</sup> term – expires 2009)  
College of Public Health-UNMC  
987850 Nebraska Medical Center  
Omaha, NE 68198-7850  
(402) 559-4960 office phone  
[jnoren@unmc.edu](mailto:jnoren@unmc.edu)

Joyce Crawford (1<sup>st</sup> term expires 2008)  
South Heartland District Health Department  
914 W. 4<sup>th</sup> Street  
Hastings, NE 68901  
402-462-6211  
[jocrawford@alltel.net](mailto:jocrawford@alltel.net)

Julie Rother (1<sup>st</sup> term expires 2008)  
Northeast Nebraska District Health Department  
117 W 3<sup>rd</sup> Street  
Wayne, NE 68787  
402-375-2200 (phone)  
[nnphd@huntel.net](mailto:nnphd@huntel.net)

Deb Scholten (1<sup>st</sup> term expires 2008)  
Northeast Nebraska District Health Department  
117 W 3<sup>rd</sup> Street  
Wayne, NE 68787  
402-375-2200 (phone)  
[nnphd@huntel.net](mailto:nnphd@huntel.net)

Roger Wiese (1<sup>st</sup> term expires 2008)  
North Central District Health Department  
316 Douglas Street  
O'Neill NE 68763  
402-336-2406(phone)  
[roger@ncdhd.info](mailto:roger@ncdhd.info)

Marty Wilken (2<sup>nd</sup> Term – expires 2009)  
Creighton University  
5010 Charles Street  
Omaha, NE 68132  
402-280-4778 (phone)  
[mwilken@creighton.edu](mailto:mwilken@creighton.edu)

## EXECUTIVE DIRECTOR

Rita Parris  
Public Health Association of Nebraska  
1321 South 37th Street  
Lincoln, NE 68510  
402-483-1039  
[PublicHealthNe@cs.com](mailto:PublicHealthNe@cs.com)

# Public Health Association of Nebraska Annual Highlights for 2007

## PHAN ACTIVITIES

### **PHAN Strategic Planning**

The Board of Directors of the Public Health Association of Nebraska met in facilitated session on Friday, April 6, 2007, to strategically plan for the future of the Association. The overall strategic focus question guiding the group's work was *"How can we, over the next 2 years, enhance both our internal and external capacities as an Association to be a force of change in improving public health in Nebraska?"*

A focused conversation revealed a consensus decision on the part of the Board to establish three work groups to implement the strategic elements determined to be most critical to launching PHAN's new strategy cycle. A short term action plan was determined, complete with a timeline and leadership designations. The three workgroups are

- Organizational Re-design - Champions: Virgil Keller, Kay Oestmann, Jeff Soukup
- Funding Preparedness - Champions: David Corbin, Deb Scholten, Dixie Zoucha
- Collaboration and Partnerships - Champions: Bob Leopold, Marty Wilkin, Julie Rother

The three workgroups had frequent meetings throughout the year. Outcomes to date:

### **Organizational Re-Design**

This workgroup is looking at developing a business plan; reviewing and updating the PHAN by-laws; reviewing internal control measures to make sure they meet audit requirements; reviewing the APHA Section Manual to find language applicable to creating a section manual for PHAN; adopting a Code of Ethics for PHAN Board Members.

### **Funding Preparedness**

This workgroup has submitted two grant proposals. One was a proposal to the Robert Wood's Foundation entitled *Advancing Public Health Practice and Policy Solutions: Fall prevention for hard to reach older adults in rural communities*. This was written in partnership with PHAN, DHHS and local health districts. The proposal was not accepted.

The second proposal is the *APHA Affiliate Capacity-Building Initiative* a Kellogg Foundation funded initiative to support the infrastructure and capacity of the nation's APHA Affiliates. Grant award notifications will be sent out mid-October. If

PHAN receives the funding it will enhance the Strategic Planning efforts of the three PHAN workgroups.

### **Collaborations and Partnerships**

This workgroup has established a priority for encouraging students to consider public health – specifically environmental health - as a career. PHAN is involved on various committees with the College of Public Health, AHEC and other groups that work with colleges and universities.

Another priority is to develop new partnerships. The Workgroup met with the President of the Nebraska Environmental Health Association, Doug Clark, to discuss the possibility of collaborating on a joint workshop. Both Boards (PHAN and NEHA) agreed to conduct two workshops that will assist staff from local health departments obtain a certification as an Environmental Health Specialists. These workshops are planned for spring of 2008 and 2009.

### **Biopreparedness Contract - Biopreparedness Funding – Department of Health and Human Services and the Center for Biopreparedness Education**

PHAN has received funding to conduct regular conference calls with the local health directors and state bioterrorism staff relating to Bioterrorism. In addition, it allows PHAN to conduct at least four workshops on response planning and other bioterrorism topics. The funding gives PHAN the opportunity to participate directly with bioterrorism planning and implementation by naming PHAN as a public health liaison between DHHS and local health departments.

In addition to Biopreparedness activities, PHAN works with DHHS and Local Health Departments on Pandemic Influenza planning. As the state and local liaison PHAN coordinates meetings and distributes information related to Pandemic flu.

Notable accomplishments are:

- The PHAN Executive Director participates on a Risk Communication Committee to help both state and locals identify common needs related to risk communications.
- Meetings were held to discuss necessary cache supplies for local health departments and hospitals in the event of a public health threat. A list of necessary supplies has been developed to assure statewide consistency in products and uses.
- Shelters for Special Needs Populations is a workgroup consisting of PHAN Members, local health departments, DHHS staff, Red Cross and NEMA. This group worked to develop a consistent chain of command that will provide coordinated public health services and interventions to people with special needs during and following a disaster.
- StratCom is a project involving DHHS, PHAN, The Strategic Air Command at Offutt Air force Base and the Peter Kiewit Institute. The intent is to develop an

early indicator model for a Pandemic Surveillance System with Predictive Indicators that collects “real time” absenteeism reports from large schools and businesses across the state.

- PHAN works with DHHS and local health departments to coordinate the annual school absenteeism weekly reports
- During seasonal influenza months, PHAN and DHHS help local health departments with collecting “Influenza like illness” data from hospitals.

### **Conferences, Workshops and Meetings**

PHAN’s annual conference continues to be draw public health professionals from across the state and from state and local agencies and organizations. There were 157 annual conference registrants in 2006, up from 133 in 2005. Preliminary numbers indicate an increase in attendance in 2007.

Workshops and meetings have been monthly to address public health concerns, resources, and training programs. Some of the topics include:

- Update on World PanFlu Issues
- Latest on Seasonal Influenza
- Influenza-like-illnesses (ILI) survey
- NEDSS Update
- Report on recent Ice storm stories
- Telehealth Video Evaluation
- Meth Bill updates
- Hospital Discharge Data
- West Nile Virus
- Mini-Grant for water systems
- Health Alert Network
- Call-Down System for emergencies
- Accreditation program for local health departments
- Update on Preparedness funding
- Risk Communication Report and coordinating messages to the media
- Disease Containment Exercise - Information sharing and discussion regarding state containment plan and use of the Pandemic Severity Index.
- DHHS - LHD Health Promotion program
- DHHS Restructuring
- Hotline Exercise
- Strategic National Stockpile
- Anti-viral distribution plan
- Shelters for special needs populations

### **Long-Term Planning**

Due to the DHHS restructuring this year, no meetings were scheduled for the PHAN and HHSS joint Strategic Planning process. They are expected to resume early in

2007. The intent of this process is to develop a 5 – 10 year plan that will more clearly define the roles of the state and local health departments. The long-term outcome of this process will enable the state and local public health departments to identify responsibilities for the eventual shift of programs from the state to the locals. These include things such as disease surveillance and followup, environmental issues and local educational programs.

### **Communications**

Public Health information is e-mailed to PHAN members on funding opportunities, public health resources and meeting announcements. Articles, news releases, resource information and meeting notices are welcome from Members.

PHAN's website has timely information on the latest, up-to-date information that is pertinent to public health professionals and boards of health. The Calendar of Events is a popular site to visit and is updated several times per week. Educational information on a number of different public health topics is available on the site and can be downloaded and modified to meet local needs. In addition, there is training information for Boards of Health and their roles and responsibilities. Information is updated regularly.

## NOTIBLES

### *Combined Public Health Conference*

DHHS, PHAN and other groups are planning a combined public health conference on April 8 – 10, 2009. This conference will include partners and topics from various state programs and other public health groups in order to provide a conference for everyone.

### *Seasonal Influenza*

There is continued coordination between HHSS and PHAN relating to seasonal influenza and the availability of vaccine. The local health departments collect weekly hospital reports on *influenza-like illnesses* and information on school absenteeism.

### *Great Plains Public Health Leadership Institute*

To encourage leadership qualities in the public health workforce, PHAN Board Members are involved in the planning and organization of the Great Plains Public Health Leadership Institute.

### *Public Health Month*

Governor Heineman declared April 2007 as Public Health Month in a ceremony at the State Capitol. For 2008, Public Health Month in Nebraska will again be planned for April.

### *National Organizations / Conferences*

The State Association of Local Boards of Health (SALBOH) was represented by Marty Wilken, PHAN Board Member and SALBOH Co-Chair, at the National Association of Local Boards of Health (NALBOH) Annual Conference in Anchorage, Alaska in September. Pat Lopez, PHAN Board Member represents PHAN as a member of the NALBOH Program Committee.

Rita Parris, PHAN Executive Director and SACCHO director, represents PHAN – SACCHO as a member of the National Association of County and City Health Officials (NACCHO) member of National SACCHO Executive Directors.

## **COMMITTEES / BOARDS / TASK FORCES / MEETINGS**

- **THE TURNING POINT PUBLIC HEALTH STEERING COMMITTEE**  
The Executive Director and other PHAN members are participating on the Turning Point Steering Committee to evaluate the current public health system and to identify key strategic initiatives for the development of an updated Public Health Improvement Plan.
- **BIOTERRORISM ADVISORY COMMITTEE**  
PHAN is a member of the statewide advisory committee for Bioterrorism. In addition, PHAN members and the Executive Director are members of several sub-committees relating to the various areas of the Bioterrorism program.
- **PUBLIC HEALTH LAW COMMITTEE**  
Several members of PHAN sit on the Public Health Law Committee. This Committee is reviewing the old public health laws, and making changes and additions in order to bring the statutes up to date.
- **OTHER COMMITTEES**  
PHAN representatives are involved with the College of Public Health External Advisory Council; the Center for Biopreparedness Education Consortium; PHHS Block Grant Advisory Committee; Nebraska Comprehensive Cancer Control Partners; New Dimensions of Health Partnership; Heart Truth Campaign; Health Insurance Policy Coalition; Tobacco Cessation Planning, Great Plains Public Health Leadership Institute, Community Advisory Council, Antibiotic Coalition, Nebraska Educational Alliance for Public Health Impact, Statewide AHEC Advisory Board, Hepatitis C Task Force, the Governor's eHealth Council and others.

## **PHAN SECTION REPORTS**

### **Emergency Response Section Report**

The Emergency Response Section members held monthly meetings by video conference and conference calls to discuss statewide preparedness issues in order to provide consistent coverage throughout the state. A two-day meeting was held in the spring to plan needed projects for the year. The template for the Emergency Response Plan used by the health departments was updated as well as a statewide template for assisting vulnerable populations during a public health emergency. Mass fatality plans for across the state are in the process of being developed, and a continuity of operations template was written for local health departments. The ERC Section helped develop a *Just in Time* training video for mass clinics. There are 24 ERC Section members. The current officers are Mark R. Graf - Chair; Amy Elwood - Vice-Chair and Concey Ramold - Secretary.

Respectfully submitted,

Mark Graf  
Emergency Response Section Chair

---

### **Public Health Education Section**

The Public Health Education Section (PHE) was approved as a PHAN Section by the Board of Directors in May 2006. The PHE Section currently has 50 members and was created to strengthen collaborative efforts between those involved in health education at state and local level health departments and other organizations across Nebraska. This past year, the Section has been developing their Strategic Plan. Proposed focus areas for the Section include providing networking opportunities, resource sharing, professional development and raising the visibility of the Public Health Education Section. The Section is also exploring the possibility of becoming a Society for Public Health Education (SOPHE) Chapter. The Section has two Co-Chairs: Jamie Hahn, representing state-level agencies and organizations; and Dixie Zoucha, representing local-level agencies and organizations. Ann Fritz serves as Secretary of the Section.

Respectfully submitted,

Dixie Zoucha and Jamie Hahn  
Public Health Education Section Co-Chairs

---

## Public Health Nursing Section

**General Information** - The April 2007 annual conference of the Public Health Nursing (PHN) Section of the Public Health Association celebrated the Section's 10<sup>th</sup> anniversary. Focus of the meeting was training public health nurses for screening for Perinatal Depression. Keynote speaker Linda Olson-Keller addressed Public Health Nursing for the 21<sup>st</sup> Century. Concurrent sessions were presented on Linking Public Health Nursing Education & Practice and Home Visit Safety. Best Practices in Public Health Nursing was the topic of the afternoon's panel discussion. Several other Public Health Nursing programs that have been developed across the State were featured through poster displays. Currently, there are 114 public health nurses in the Section.

**Continuing Competence** - An interactive CE curriculum for providers on Perinatal Depression has been developed. The curriculum is being housed on an independent server and is linked to the HHSS website via a splash page at: [www.hhss.ne.gov/PerinatalDepression](http://www.hhss.ne.gov/PerinatalDepression). The web-based curriculum went "live" on May 11, 2007. PHAN and the PHN Section Advisory Committee will continue to work with the webmaster to keep the webpage current.

Tool Kits for Perinatal Depression, in compliance with Nebraska practice standards and regulations, were researched, developed, and distributed for use by primary care providers. A satisfaction survey was developed by the UNMC CON research team and included in the toolkit as a means of initial evaluation.

The Section provided training and technical assistance on Perinatal Depression to a least 35 community-based programs and agencies. Continuing education for nurses was also offered through the Nebraska Nurse.

The Section continues to develop a 24 member PHN Emergency Response Team as Nebraska's contribution to the Ten State Mid-America Alliance. The purpose of the Team is to assist with regional incidents (not declared emergency by the Governor) but require expertise in the areas of epidemiology, surveillance, and mass immunization and medication distribution. The above projects are funded through the Bioterrorism Collaborative at UNMC.

Funding for the development of the Center for Public Health Nursing continues to be actively pursued. The section has sponsored continuing education opportunities for public health nurses at least three times a year. The focus of the education is excellence in practice and knowledge of current trends in the field.

Respectfully submitted,

Pat Lopez, MSN, RN  
Public Health Nursing Section Chair

---

## **State Association of County & City Health Officials (SACCHO)**

The State Association of City and County Health Officers (SACCHO) Section of PHAN currently has membership encompassing all eighteen 692 Health Departments and Scottsbluff County Health Department. Current officers are Kay Oestmann – Chair; Kim Engel – Vice-Chair and Terry Krohn – Secretary. Rita Parris is the SACCHO Director.

SACCHO members and their health departments have continued to grow and develop new programming. Through shifting of numerous public health responsibilities from the state level to the local level, health departments have been better able to directly serve their residents. In addition, DHHS (Department of Health and Human Services) has supplied local health departments with some funding that may be used locally for mini grants; usually for infrastructure in the communities.

As a result of LB 1060, all 692 departments have added increased surveillance and disease reporting. Bringing this to the local level has enabled departments to recognize and assess public health threats and assure our communities safety.

Through LB 1060 funding to PHAN, SACCHO has been developing data standards for statewide implementation by local health departments. The work group, led by Pat Lopez and Jeff Kuhr, has categorized data developing a set that will be most useful and timely for the LHDs. This work group was established in part with funding that went to the surveillance project.

As a part of the statewide assessment initiative, most health departments have purchased a tool called TRALE. Residents can use this interactive health needs assessment tool to provide individual health assessments. Collective information will provide specific data for each health district.

All health departments have signed a BRFSS contract with DHHS that includes more detailed survey questions for each district. This will enable better community health prioritization for planning needs.

Most health departments have or are completing the MAPP (Mobilizing for Action through Planning and Partnership) process and many are completing a Maternal Child Health assessment.

In April and again in July, the SACCHO applied for statewide coverage of Every Woman Matters. The application was unsuccessful.

The SACCHO has utilized Friends of Public Health in developing a strong advocacy for public health legislation. Pat Lopez has served as legislative liaison. The legislative

watch group was comprised of Bruce Dart, Adi Pour, Kathy Nordby, Jeff Kuhr and Kay Oestmann. Jeff and Kay frequently offered testimony for bills identified by the group. As a result of the legislative oversight of this group, we were able to stall a cut in LB1060 funding that amounted to a decrease of \$133,750.

Professionally, several of our members and their staff have been published this year. Numerous departments have been able to share programs they have developed and successes they have had at meetings both within the state and nationally. Dr. Bruce Dart has been elected Vice President of NACCHO for the coming year.

The cohesiveness of this section has assisted us in our continued growth and in working toward our vision of developing a statewide seamless public health system.

Respectfully submitted,

Kay Oestmann, SACCHO Chair

---

### **State Association of Local Boards of Health (SALBOH)**

Nineteen of Nebraska's twenty Boards of Health are members of the Nebraska State Association of Local Boards of Health (SALBOH). The purpose of the SALBOH is to provide an opportunity for board of health members to interact, see what other boards are doing across the state and provide a communication link statewide and nationally. Co-Chairs are Marty Wilken and Virgil Keller.

The *Board of Health Training Manual* is posted on the PHAN website (<http://www.publichealthne.org/salboh.htm>) and has been updated to include the following templates:

- Health Director Job description
- Director Interview Questions
- Health Director Evaluation form and process

The NALBOH (National Association of Local Boards of Health) *All Hazards Preparedness Guide* will be included in the Board of Health Training Manual. Plans are being made to have a NALBOH staff member attend the Nebraska Association of County Officials (NACO) annual conference in December to provide training to BOH members on this guide.

County resolution templates related to the following have been developed for adoption by local boards of health:

- Quarantine and Isolation
- Nuisance
- Tetanus and Diphtheria

All local health departments have televideo conferencing equipment. This saves time and travel for local health department staff and board of health members. Several training sessions and meetings have been conducted the past year via videoconferencing.

Technical assistance has been provided on an individual basis to several health departments for topics such as hiring health directors, staff job descriptions, state grant process and personnel issues.

Respectfully submitted,

Marty Wilken, SALBOH Co-Chair

## **FINANCIAL REPORT at a Glance**

**September 15, 2007 – Total current assets - \$164,102.41**

January 1, 2007 - \$174,929.89

January 1, 2006 - \$130,741.40

January 1, 2005 - \$117,311.15

January 1, 2004 - \$84,653.57

January 1, 2003 - \$122,670.02

January 1, 2002 - \$100,433.11

January 1, 2001 - \$25,591.42

January 2000 - \$9,000

## **MEMBERSHIP**

<b>2007</b>	<b>401 Individual members</b>	<b>27 Organizational Members</b>	<b>428 Total</b>
2006	350 Individual members	34 Organizational Members	384 Total
2005	330 Individual members	11 organizational Members	341 Total
2004	296 Individual members	19 organizational members	315 Total
2003	276 Individual members	8 organizational members	284 Total
2002	248 Individual members	5 organizational members	253 Total
2001	260 individual members	4 organizational members	264 Total
2000	186 Individual members	0 organizational members	186 Total

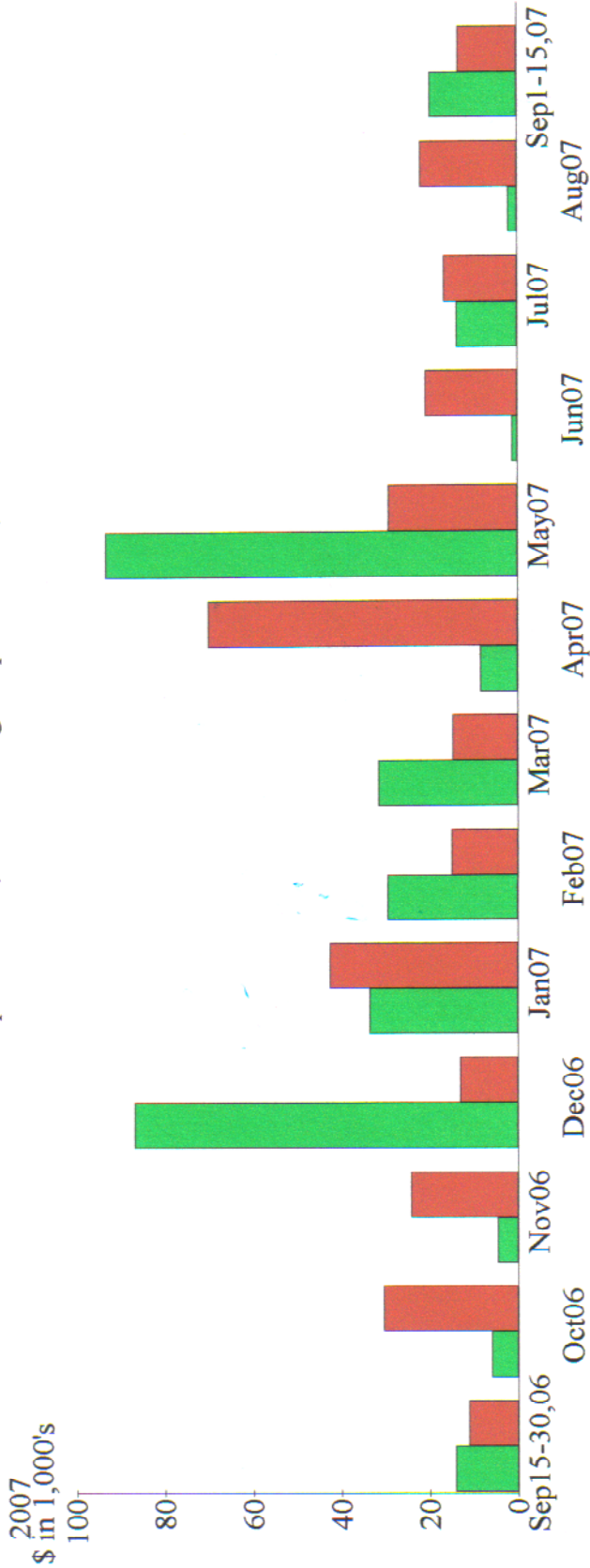
11:53 AM  
09/22/07  
Cash Basis

**Public Health Association of Nebraska**  
**Balance Sheet**  
**As of September 15, 2007**

	<u>Sep 15, 07</u>
<b>ASSETS</b>	
<b>Current Assets</b>	
<b>Checking/Savings</b>	
Money Market Account	94,835.77
Union Bank & Trust	<u>57,661.81</u>
<b>Total Checking/Savings</b>	152,497.58
<b>Other Current Assets</b>	
CD#418923	5,330.45
CD#418922	<u>5,392.06</u>
<b>Total Other Current Assets</b>	<u>10,722.51</u>
<b>Total Current Assets</b>	163,220.09
<b>Fixed Assets</b>	
Equipment	2,941.05
Accum Depr- Equipment	<u>-2,058.73</u>
<b>Total Fixed Assets</b>	<u>882.32</u>
<b>TOTAL ASSETS</b>	<b><u>164,102.41</u></b>
<b>LIABILITIES &amp; EQUITY</b>	
<b>Equity</b>	
Net Assets	124,083.83
Retained Earnings	50,842.06
Net Income	<u>-10,823.48</u>
<b>Total Equity</b>	<u>164,102.41</u>
<b>TOTAL LIABILITIES &amp; EQUITY</b>	<b><u>164,102.41</u></b>

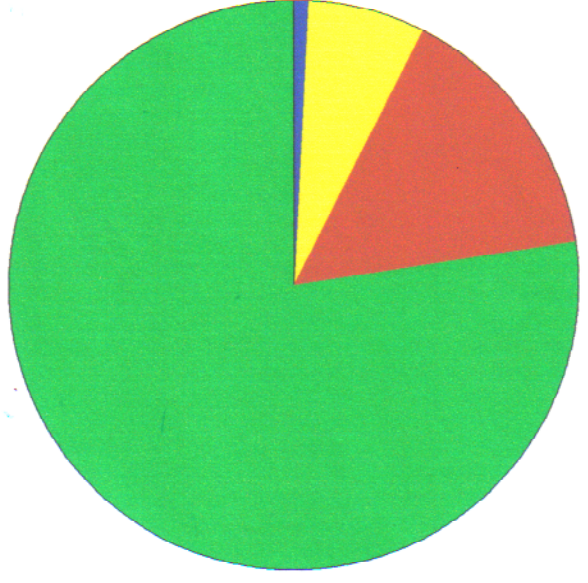
Income and Expense by Month  
September 15, 2006 through September 15, 2007

Income  
Expense



Income Summary  
September 15, 2006 through September 15, By Account

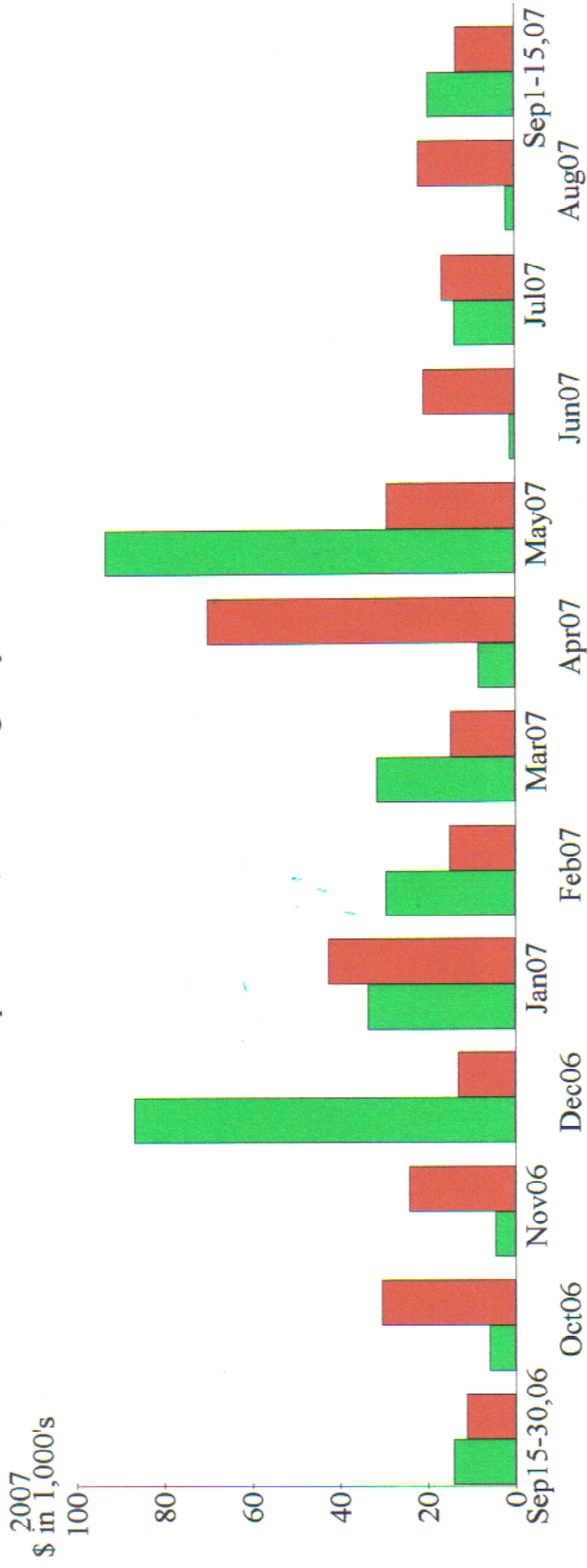
Grants	%77.49
Membership Dues	15.20
Conference Income	6.70
Interest Income	0.61
Total	\$345,926.19



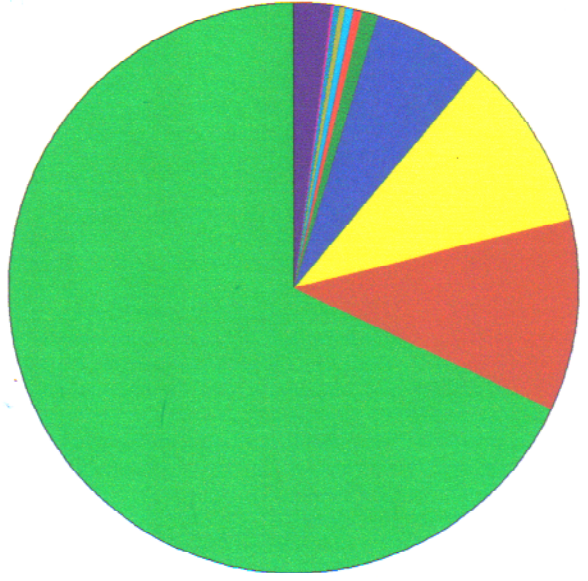
By Account

Income and Expense by Month  
September 15, 2006 through September 15, 2007

Income  
Expense



Expense Summary  
September 15, 2006 through September 15, 2007



Grants & Contracts	%68.11
Contract Labor	10.90
Section Expenses	10.13
Conference Expense	6.48
Communications	1.06
Insurance	0.54
Meeting Expense	0.50
Travel	0.43
Postage and Delivery	0.36
Supplies	0.28
Other	1.23
Total	\$324,089.89

By Account